



[I-21/343/2025-W&M Section]

GOVERNMENT OF INDIA/भारत सरकार  
MINISTRY OF CONSUMER AFFAIRS, FOOD AND PUBLIC DISTRIBUTION  
उपभोक्ता मामले, खाद्य एवं सार्वजनिक वितरण मंत्रालय  
DEPARTMENT OF CONSUMER AFFAIRS/ उपभोक्ता मामले विभाग  
LEGAL METROLOGY DIVISION/ विधिक मापविज्ञान प्रभाग

Krishi Bhawan, New Delhi /कृषि भवन, नई दिल्ली  
Dated/दिनांक:- 15.12.2025

Certificate of Approval of Model/ मॉडल का अनुमोदन प्रमाणपत्र

Whereas the Central Government, after considering the report submitted to it by prescribed authority along with the EU-type examination certificate no. TCM 143/25-6003 addition 1 issued by Czech Metrology Institute, Okružní 31,638 00 Brno, Czech Republic is satisfied that the model described in the said report (see the figure given below) is in conformity with the provisions of the Legal Metrology Act, 2009 (1 of 2010) and the Legal Metrology (Approval of Models) Rules, 2011 and the said model is likely to maintain its accuracy over periods of sustained use and to render accurate service under varied conditions;

Now, therefore, in exercise of the powers conferred by section 22 of the Legal Metrology Act, 2009 (1 of 2010) read with sub-rule (6) of rule 8 and sub-rule (4) of rule 11 of the Legal Metrology (Approval of Models) Rules, 2011, the Central Government hereby issues the certificate of approval of the model of volume conversion device, Type “Corus Evo Compact” (hereinafter referred to as the said model), manufactured by M/s Dresser Utility Solutions GmbH, Hardeckstrasse 2, D-76185 Karlsruhe, Germany and imported & marketed in India without any alteration before or after sale by M/s Genus Power Infrastructures Limited, , SP1-2317, RIICO Industrial Area, Ramchandrapura, Sitapura Extension, Jaipur-302022, Rajasthan and which is assigned the approval mark IND/09/25/ 527 (the picture of the model is given below as Figure 1);

**Valid until : 14.04.2035**

Figure 1



**Technical Data:**

Electromagnetic environment class	E2
Mechanical environment class	M2
Climatic environment	-25 °C to +70 °C or optionally -40 °C to +70 °C
Mechanical parameters	
Dimension	(224x182x63) mm, with ext. cover (269x182x63) mm
Material of casting	PC (polycarbonate)
Ingress protection	IP66
Power supply	
Supplying Battery type	Saft LS33600 17 Ah. EVE ER34615C 19 Ah. VITRZROCELL SB-D02 19 Ah.
Supplying battery voltage	3.6 V



Software version:

Graphical Display	Version	CRC-32
Loader	ver.2.03	77F3DC91
Metrolog	ver.2.03	4F1BCDD7

Pressure measurement:

Number of inputs (transducers)	0 1
Absolute Pressure transducer	EDT 125, digital pressure
Maximum measuring ranges	(60 to 520) kPa (60 to 1000) kPa (60 to 2000) kPa (80 to 520) kPa (80 to 1000) kPa (80 to 2000) kPa (200 to 1000) kPa (400 to 2000) kPa (400 to 7000) kPa (700 to 3500) kPa (1400 to 7000) kPa
Maximum overload capacity	125% of upper limit of measuring range
Make	Internal or external with bushing
External Transducer cable length	Maximum 100 m total length of the internal bus cable

Temperature measurement:

Number of inputs (transducers)	1
Transducers	EDT 124, digital temperature transducer
Maximum measuring range	-25 °C to +70 °C or optionally -40 °C to +70 °C
Transducer variant	External with bushing
External transducer cable length	Maximum 100 m total length of the internal bus cable

Digital Input:

Number	4
Terminal Designation (DIN Terminal)	DI1,DI2,DI3,DI4
Input options (SW configuration)	3 x LF pulse input, 1 x binary input/contact intrusion/LF pulse input to evaluate the direction of rotation of the meter
Cable length of each input	30 m

NF Pulse input:

Terminal	DI1,DI2,DI3 (DI1,DI4 with option to evaluate the direction of rotation of the meter)
Maximum frequency	10 Hz
Input Type	Reed contact or non-potential output, WIEGAND
Minimal pulse/idle period	40 ms
Open circuit voltage	(2.80 to 3.65) V



Communication module:

Communication module RS 232/RS485	
Maximum number of modules in the device	1
Place of installation	integrated
Galvanic isolation	Yes
Serial communication interface	RS485 or RS232 (it cannot be used simultaneously)
Internal modems	
Maximum number of modules in the device	1
Place of installation	Modem user replaceable plate
Type of communication	GSM/GPRS
Frequency	850 MHz/1900MHz
Place of installation	Modem user replaceable plate
Type of communication	4G:LTE/NB-IoT
Frequency	850 MHz/1900MHz

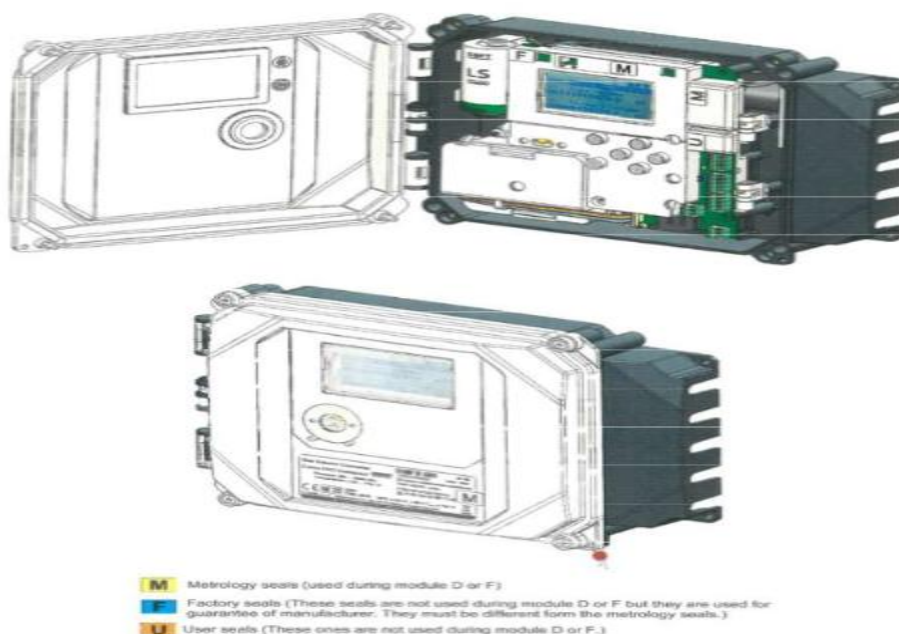


Figure 2

A typical schematic diagram of sealing provision to prevent the fraudulent practices of the model is given above as Figure 2.

[F.No. I-21/343/2025-W&M Section]



(Ashutosh Agarwal/आशुतोष अग्रवाल)  
 Director (Legal Metrology) to Govt. of India/ निदेशक (विधिक माप विज्ञान) भारत सरकार  
 Phone/दूरभाष 01123389489  
 Email/ई-मेल: [dirwm-ca@nic.in](mailto:dirwm-ca@nic.in)

Online Application No. 23689